



ALVENIUS[®]

PIPE SYSTEM

TECHNICAL DATA



Information



The Alvenius standard product range is approved according to PED 97/23/EC. The PED approval has been integrated with the certified Quality Management System.

ØD Outside diameter
t Wall thickness
L Length

Max working pressure at +20°C

When item number is missing, please contact Alvenius.

Other pipe lengths can be offered on request.

Untreated pipes can be offered on request.

AB Alvenius Industrier maintains a continual policy of product improvement and, therefore, reserves the right to change product specifications, designs and standard equipment without notice and without incurring obligation.

K10 - Metrical standard

Up to 25 bar Hot-dip galvanized or thermo-plastic coated

| | |
|---|---|
| Pipes | 4 |
| Supplement pipes | 5 |
| Quick couplings | 5 |
| Mounting grease | 5 |
| Rubber gaskets | 5 |
| Bolt, nut, lock rings | 5 |
| Bends, smooth | 6 |
| Branch pipes | 6 |
| Tees | 7 |
| Tees with threaded outlet | 7 |
| Hose sockets | 7 |
| Air distributor pipes | 8 |
| Reducers | 8 |
| Connecting pieces with thread | 8 |
| Connecting pieces with flange | 8 |
| End caps | 9 |
| Welding rings, untreated | 9 |
| Alvenius gate valves | 9 |



Type Victaulic - ISO standard

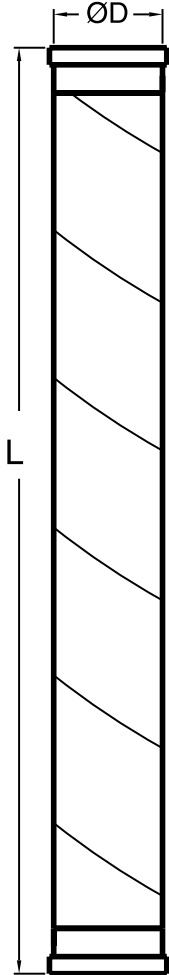
Up to 80 bar Hot-dip galvanized or thermo-plastic coated

| | |
|---|-------|
| Pipes | 10-11 |
| Quick couplings | 11 |
| Rubber gaskets | 11 |
| Bends | 12 |
| Reducers Victaulic-K10 | 12 |
| Reducers | 13 |
| Connecting pieces with flange | 13 |
| Tees | 13 |
| Tees with threaded outlet | 14 |
| End caps | 14 |
| Welding rings, untreated | 14 |



K10 pipes and pipe fittings

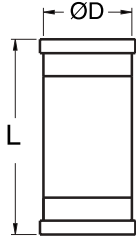
Pipes K10



| ØD mm | t mm | L m | Max working pressure bar | Hot-dip galvanized Item No | Weight kg | Thermo-plastic coated Item No | Weight kg |
|----------|---------|--------|-----------------------------|-------------------------------|--------------|----------------------------------|--------------|
| 48 | 1,4 | 0,2 | 25 | 100032101 | 0,40 | | |
| 48 | 1,4 | 0,5 | 25 | 100034101 | 0,92 | | |
| 48 | 1,4 | 1 | 25 | 100035101 | 1,74 | | |
| 48 | 1,4 | 2 | 25 | 100036101 | 3,66 | | |
| 48 | 1,4 | 3 | 25 | 100037101 | 5,46 | | |
| 48 | 1,4 | 4 | 25 | 100038101 | 7,25 | | |
| 48 | 1,4 | 5 | 25 | 100039101 | 9,05 | | |
| 48 | 1,4 | 5,8 | 25 | 100041101 | 10,49 | | |
| 60 | 1,8 | 0,2 | 25 | 101122101 | 0,60 | | |
| 60 | 1,8 | 0,5 | 25 | 101124101 | 1,38 | | |
| 60 | 1,8 | 1 | 25 | 101125101 | 2,90 | | |
| 60 | 1,8 | 2 | 25 | 101126101 | 5,72 | | |
| 60 | 1,8 | 3 | 25 | 101127101 | 8,54 | | |
| 60 | 1,8 | 4 | 25 | 101128101 | 11,36 | | |
| 60 | 1,8 | 5 | 25 | 101129101 | 14,18 | | |
| 60 | 1,8 | 5,8 | 25 | 101131101 | 16,43 | | |
| 76 | 2 | 0,2 | 25 | 100071101 | 0,92 | | |
| 76 | 2 | 0,5 | 25 | 100074101 | 2,07 | | |
| 76 | 2 | 1 | 25 | 100075101 | 4,36 | | |
| 76 | 2 | 2 | 25 | 100076101 | 8,04 | | |
| 76 | 2 | 3 | 25 | 100077101 | 11,97 | | |
| 76 | 2 | 4 | 25 | 100078101 | 15,91 | | |
| 76 | 2 | 5 | 25 | 100079101 | 19,85 | | |
| 76 | 2 | 5,8 | 25 | 100081101 | 22,99 | | |
| 102 | 2 | 0,2 | 25 | 100120101 | 1,23 | 100120106 | 1,30 |
| 102 | 2 | 0,5 | 25 | 100104101 | 2,68 | 100104106 | 2,80 |
| 102 | 2 | 1 | 25 | 100105101 | 5,22 | 100105106 | 5,84 |
| 102 | 2 | 2 | 25 | 100106101 | 10,84 | 100106106 | 10,84 |
| 102 | 2 | 3 | 25 | 100107101 | 16,13 | 100107106 | 16,13 |
| 102 | 2 | 4 | 25 | 100108101 | 21,42 | 100108106 | 21,42 |
| 102 | 2 | 5 | 25 | 100109101 | 26,71 | 100109106 | 26,71 |
| 102 | 2 | 5,8 | 25 | 100111101 | 30,95 | 100111106 | 30,94 |
| 152 | 2 | 0,2 | 25 | 101237101 | 2,24 | | |
| 152 | 2 | 5,8 | 25 | 101240101 | 46,87 | | |
| 152 | 2,5 | 0,2 | 25 | 100142101 | 2,36 | 100142106 | 2,57 |
| 152 | 2,5 | 0,5 | 25 | 100144101 | 5,17 | 100144106 | 5,32 |
| 152 | 2,5 | 1 | 25 | 100145101 | 9,92 | 100145106 | 10,18 |
| 152 | 2,5 | 2 | 25 | 100146101 | 20,22 | 100146106 | 20,22 |
| 152 | 2,5 | 3 | 25 | 100147101 | 30,01 | 100147106 | 30,01 |
| 152 | 2,5 | 4 | 25 | 100148101 | 39,79 | 100148106 | 39,79 |
| 152 | 2,5 | 5 | 25 | 100149101 | 49,58 | 100149106 | 49,58 |
| 152 | 2,5 | 5,8 | 25 | 100151101 | 57,41 | 100151106 | 57,21 |
| 203 | 3 | 0,2 | 16 | 100188101 | 5,27 | 100188106 | 5,26 |
| 203 | 3 | 0,5 | 16 | 100193101 | 9,94 | 100193106 | 9,92 |
| 203 | 3 | 1 | 16 | 100194101 | 17,72 | 100194106 | 17,67 |
| 203 | 3 | 2 | 16 | 100195101 | 33,27 | 100195106 | 33,18 |
| 203 | 3 | 3 | 16 | 100196101 | 48,83 | 100196106 | 48,70 |
| 203 | 3 | 4 | 16 | 100197101 | 64,39 | 100197106 | 64,21 |
| 203 | 3 | 5 | 16 | 100198101 | 79,95 | 100198106 | 79,72 |
| 203 | 3 | 5,8 | 16 | 100192101 | 92,39 | 100192106 | 92,13 |
| 273 | 4 | 0,2 | 16 | 100331101 | 8,11 | 100331106 | 8,10 |
| 273 | 4 | 0,5 | 16 | 100332101 | 16,38 | 100332106 | 16,35 |
| 273 | 4 | 1 | 16 | 100333101 | 30,16 | 100333106 | 30,10 |
| 273 | 4 | 2 | 16 | 100334101 | 57,71 | 100334106 | 57,59 |
| 273 | 4 | 3 | 16 | 100335101 | 85,27 | 100335106 | 85,09 |
| 273 | 4 | 4 | 16 | 100336101 | 112,83 | 100336106 | 112,59 |
| 273 | 4 | 5 | 16 | 100337101 | 140,39 | 100337106 | 140,08 |
| 273 | 4 | 5,8 | 16 | 100330101 | 162,43 | 100330106 | 162,08 |
| 318 | 4 | 0,2 | 16 | 100222101 | 12,23 | 100222106 | 12,22 |
| 318 | 4 | 0,5 | 16 | 100224101 | 21,88 | 100224106 | 21,85 |
| 318 | 4 | 1 | 16 | 100225101 | 37,97 | 100225106 | 37,90 |
| 318 | 4 | 2 | 16 | 100226101 | 70,14 | 100226106 | 69,99 |
| 318 | 4 | 3 | 16 | 100227101 | 102,30 | 100227106 | 102,09 |
| 318 | 4 | 4 | 16 | 100228101 | 134,47 | 100228106 | 134,19 |
| 318 | 4 | 5 | 16 | 100229101 | 166,64 | 100229106 | 166,28 |
| 318 | 4 | 5,8 | 16 | 100230101 | 192,37 | 100230106 | 191,96 |
| 355 | 4 | 0,2 | 16 | 100758101 | 13,85 | 100758106 | 13,83 |
| 355 | 4 | 0,5 | 16 | 100759101 | 24,64 | 100759106 | 24,60 |
| 355 | 4 | 1 | 16 | 100760101 | 42,61 | 100760106 | 42,54 |
| 355 | 4 | 2 | 16 | 100761101 | 78,57 | 100761106 | 78,41 |
| 355 | 4 | 3 | 16 | 100762101 | 114,53 | 100762106 | 114,29 |
| 355 | 4 | 4 | 16 | 100763101 | 150,49 | 100763106 | 150,17 |
| 355 | 4 | 5 | 16 | 100764101 | 186,45 | 100764106 | 186,05 |
| 355 | 4 | 5,8 | 16 | 100757101 | 215,22 | 100757106 | 214,75 |

K10 pipes and pipe fittings

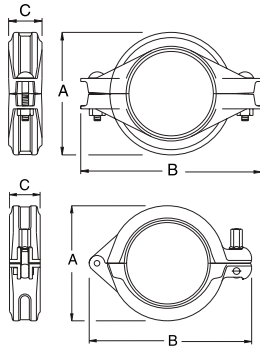
Supplement pipes K10



| ØD mm | t mm | L m | Max working pressure bar | Hot-dip galvanized Item No | Weight kg | Thermo-plastic coated Item No | Weight kg |
|----------|---------|--------|-----------------------------|-------------------------------|--------------|----------------------------------|--------------|
| 48 | 1,4 | 148 | 25 | 101211101 | 0,32 | | |
| 60 | 1,8 | 160 | 25 | 101212101 | 0,53 | | |
| 76 | 2 | 176 | 25 | 101213101 | 0,85 | | |
| 102 | 2 | 202 | 25 | 100985101 | 1,22 | 100985106 | 1,21 |
| 152 | 2,5 | 252 | 25 | 101218101 | 2,92 | 101218106 | 2,90 |

Quick couplings and accessories

Couplings K10/K70 complete with rubber gasket



| ØD mm | A mm | B mm | C mm | Max defl. | Max work. pres. bar | Painted Item No | Weight kg | Thermo-plastic coated Item No | Weight kg |
|----------|---------|---------|---------|-----------|------------------------|--------------------|--------------|----------------------------------|--------------|
| 48 | K10 77 | 124 | 37 | 5,0° | 25 | 120258109 | 0,62 | | |
| 60 | K10 89 | 137 | 39 | 2,5° | 25 | 120267109 | 0,71 | | |
| 76 | K10 109 | 168 | 40 | 4,0° | 25 | 120276109 | 0,93 | | |
| 102 | K10 140 | 208 | 46 | 2,0° | 25 | 120290109 | 1,49 | 120290106 | 1,54 |
| 152 | K10 202 | 280 | 55 | 2,1° | 25 | 120311109 | 2,92 | 120311106 | 3,10 |
| 203 | K10 267 | 350 | 83 | 2,1° | 16 | 120330109 | 6,72 | 120330106 | 7,07 |
| 273 | K10 343 | 456 | 84 | 1,4° | 16 | 120354109 | 14,17 | 120354106 | 18,20 |
| 318 | K10 393 | 490 | 80 | 0,8° | 16 | 120360109 | 16,60 | 120360106 | 17,00 |
| 355 | K10 444 | 544 | 81 | 0,9° | 16 | 120370109 | 16,78 | 120370106 | 22,00 |
| 48 | K70 77 | 130 | 37 | 6,5° | 16 | 120900709 | 0,68 | | |
| 60 | K70 89 | 142 | 39 | 4,5° | 16 | 120901709 | 0,81 | | |
| 76 | K70 110 | 162 | 40 | 5,0° | 16 | 120902709 | 0,97 | | |
| 102 | K70 143 | 210 | 46 | 2,5° | 16 | 120903709 | 1,80 | | |
| 152 | K70 206 | 291 | 55 | 1,5° | 16 | 120904709 | 3,79 | | |

Mounting grease

| Weight | Item No | Weight kg |
|--------------|-----------|-----------|
| 125 gram Tub | 300029000 | 0,15 |
| 907 gram Can | 300028000 | 1,10 |

Rubber gaskets



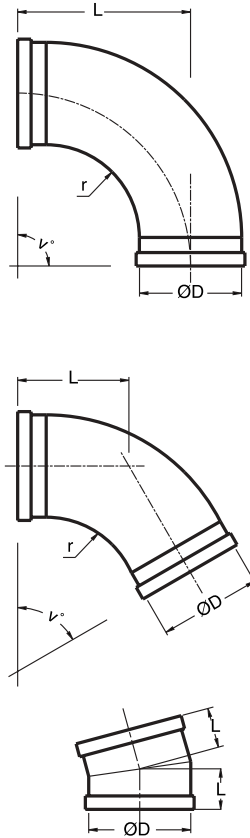
| ØD mm | EPDM Item No | Weight kg |
|----------|-----------------|--------------|
| 48 | 120264101 | 0,02 |
| 60 | 120273101 | 0,03 |
| 76 | 120282101 | 0,05 |
| 102 | 120296101 | 0,08 |
| 152 | 120315101 | 0,20 |
| 203 | 120334101 | 0,24 |
| 273 | 120357101 | 0,40 |
| 318 | 120363101 | 0,59 |
| 355 | 120373101 | 0,72 |

Bolt, Nut, Lock ring

| ØD mm | Bolt | Item No | Weight kg |
|----------|-----------|-----------|--------------|
| 48 | | 120159991 | 0,03 |
| | Nut | 120160991 | 0,01 |
| | Lock ring | 120161100 | 0,01 |
| 60/76 | | 120162991 | 0,03 |
| | Nut | 120160991 | 0,01 |
| | Lock ring | 120161100 | 0,01 |
| 102 | | 120166991 | 0,07 |
| | Nut | 120167991 | 0,02 |
| | Lock ring | 120168100 | 0,01 |
| 152 | | 120169991 | 0,07 |
| | Nut | 120167991 | 0,02 |
| | Lock ring | 120168100 | 0,01 |
| 203 | | 120163991 | 0,14 |
| | Nut | 120164991 | 0,04 |
| | Lock ring | 120165100 | 0,01 |
| 273/ | 7/8"x85 | 120175991 | 0,35 |
| 318/ | Nut | 120176991 | 0,07 |
| 355 | Lock ring | 120177100 | 0,02 |

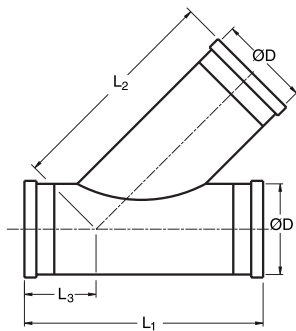
K10 pipes and pipe fittings

Bends, smooth short radius



| ØD mm | Angle° | L mm | r mm | Max working pressure bar | Hot-dip galvanized Item No | Weight kg | Thermo-plastic coated Item No | Weight kg |
|----------|--------|---------|---------|-----------------------------|-------------------------------|--------------|----------------------------------|--------------|
| 48 | 7,5 | 51 | | 25 | 110445101 | 0,28 | | |
| 48 | 15 | 53 | | 25 | 110446101 | 0,25 | | |
| 48 | 30 | 58 | 34 | 25 | 110447101 | 0,36 | | |
| 48 | 45 | 67 | 34 | 25 | 110448101 | 0,42 | | |
| 48 | 90 | 100 | 34 | 25 | 110450101 | 0,55 | | |
| 60 | 7,5 | 52 | | 25 | 110466101 | 0,38 | | |
| 60 | 15 | 54 | | 25 | 110467101 | 0,38 | | |
| 60 | 30 | 63 | 46 | 25 | 110468101 | 0,56 | | |
| 60 | 45 | 74 | 46 | 25 | 110469101 | 0,66 | | |
| 60 | 90 | 119 | 46 | 25 | 110471101 | 0,96 | | |
| 76 | 7,5 | 50 | | 25 | 110487101 | 0,53 | | |
| 76 | 15 | 55 | | 25 | 110488101 | 0,53 | | |
| 76 | 30 | 68 | 57 | 25 | 110489101 | 0,84 | | |
| 76 | 45 | 82 | 57 | 25 | 110490101 | 1,01 | | |
| 76 | 90 | 138 | 57 | 25 | 110492101 | 1,52 | | |
| 102 | 7,5 | 53 | | 25 | 110529101 | 0,72 | 110529106 | 0,71 |
| 102 | 15 | 57 | | 25 | 110530101 | 0,72 | 110530106 | 0,70 |
| 102 | 30 | 79 | 82 | 25 | 110531101 | 1,45 | 110531106 | 1,42 |
| 102 | 45 | 98 | 82 | 25 | 110532101 | 1,82 | 110532106 | 1,77 |
| 102 | 90 | 177 | 82 | 25 | 110534101 | 2,81 | 110534106 | 2,74 |
| 152 | 7,5 | 50 | | 25 | 110585101 | 1,54 | 110585106 | 1,52 |
| 152 | 15 | 720 | | 25 | 110586101 | 1,84 | 110586106 | 1,80 |
| 152 | 30 | 101 | 139 | 25 | 110587101 | 3,42 | 110587106 | 3,30 |
| 152 | 45 | 132 | 139 | 25 | 110588101 | 4,41 | 110588106 | 4,24 |
| 152 | 90 | 258 | 139 | 25 | 110590101 | 7,31 | 110590106 | 6,95 |
| 203 | 7,5 | 62 | 186 | 16 | 111220101 | 4,96 | 111220106 | 4,89 |
| 203 | 15 | 81 | 186 | 16 | 111221101 | 6,19 | 111221106 | 6,04 |
| 203 | 30 | 120 | 186 | 16 | 111222101 | 8,21 | 111222106 | 7,92 |
| 203 | 45 | 162 | 186 | 16 | 111223101 | 11,28 | 111223106 | 10,83 |
| 203 | 90 | 331 | 186 | 16 | 111225101 | 19,07 | 111225106 | 18,11 |
| 273 | 7,5 | 73 | 245 | 16 | 110669101 | 8,96 | 110669106 | 8,84 |
| 273 | 15 | 98 | 245 | 16 | 110670101 | 10,76 | 110670106 | 10,49 |
| 273 | 30 | 150 | 245 | 16 | 110671101 | 15,52 | 110671106 | 14,97 |
| 273 | 45 | 206 | 245 | 16 | 110672101 | 18,40 | 110672106 | 17,66 |
| 273 | 90 | 429 | 245 | 16 | 110674101 | 30,80 | 110674106 | 29,26 |
| 318 | 7,5 | 73 | 295 | 16 | 110679101 | 11,13 | 110679106 | 10,98 |
| 318 | 15 | 120 | 295 | 16 | 110678101 | 17,40 | 110678106 | 16,97 |
| 318 | 30 | 182 | 295 | 16 | 110677101 | 24,79 | 110677106 | 23,92 |
| 318 | 45 | 249 | 295 | 16 | 110676101 | 32,19 | 110676106 | 30,90 |
| 318 | 90 | 517 | 295 | 16 | 110675101 | 54,00 | 110675106 | 51,30 |
| 355 | 7,5 | 86 | 355 | 16 | 110725101 | 22,80 | 110725106 | 22,49 |
| 355 | 15 | 118 | 355 | 16 | 110726101 | 22,80 | 110726106 | 22,23 |
| 355 | 30 | 191 | 355 | 16 | 110727101 | 32,60 | 110727106 | 31,46 |
| 355 | 45 | 269 | 355 | 16 | 110728101 | 42,30 | 110728106 | 40,61 |
| 355 | 90 | 582 | 355 | 16 | 110730101 | 71,50 | 110730106 | 67,93 |

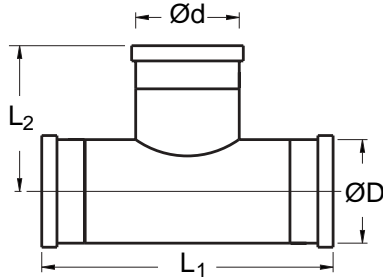
Branch pipes 45°



| ØD mm | L ₁ mm | L ₂ mm | L ₃ mm | Max work.press bar | Hot-dip galvanized Item No | Weight kg | Thermo-plastic coated Item No | Weight kg |
|----------|----------------------|----------------------|----------------------|-----------------------|-------------------------------|--------------|----------------------------------|--------------|
| 48 | 225 | 195 | 88 | 17 | 110173101 | 0,83 | | |
| 76 | 280 | 250 | 102 | 15 | 110178101 | 2,06 | | |
| 102 | 325 | 316 | 112 | 10 | 110184101 | 3,20 | 110184106 | 3,02 |
| 152 | 400 | 380 | 125 | 8 | 110189101 | 7,26 | 110189106 | 7,05 |

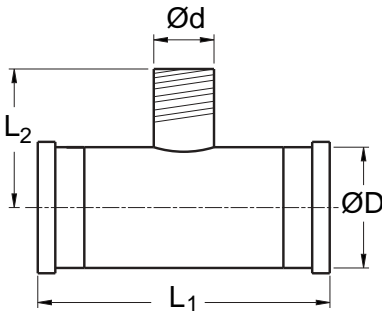
K10 pipes and pipe fittings

Tees



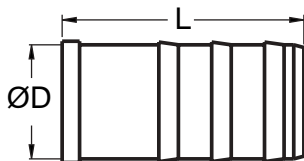
| ØD mm | Ød mm | L ₁ mm | L ₂ mm | Max working pressure bar | Hot-dip galvanized Item No | Weight kg | Thermo-plastic coated Item No | Weight kg |
|----------|----------|----------------------|----------------------|-----------------------------|-------------------------------|--------------|----------------------------------|--------------|
| 48 | 48 | 148 | 99 | 25 | 111696101 | 0,49 | | |
| 60 | 48 | 160 | 105 | 25 | 111697101 | 0,65 | | |
| 60 | 60 | 160 | 105 | 25 | 111698101 | 0,75 | | |
| 76 | 48 | 176 | 113 | 25 | 111699101 | 0,98 | | |
| 76 | 60 | 176 | 113 | 25 | 111700101 | 1,03 | | |
| 76 | 76 | 176 | 138 | 25 | 111701101 | 1,25 | | |
| 102 | 48 | 202 | 125 | 25 | 111705101 | 1,39 | | |
| 102 | 60 | 202 | 125 | 25 | 111706101 | 1,52 | | |
| 102 | 76 | 202 | 151 | 25 | 111707101 | 1,67 | | |
| 102 | 102 | 202 | 151 | 18 | 111709101 | 1,78 | 111709106 | 1,84 |
| 152 | 76 | 252 | 151 | 21 | 111712101 | 3,20 | | |
| 152 | 102 | 252 | 176 | 18 | 111713101 | 3,41 | 111713106 | 3,42 |
| 152 | 152 | 252 | 176 | 14 | 111715101 | 3,98 | 111715106 | 4,00 |
| 203 | 152 | 509 | 202 | 14 | 111727101 | 10,96 | 111727106 | 11,00 |
| 203 | 203 | 509 | 255 | 12 | 111728101 | 14,06 | 111728106 | 14,10 |
| 273 | 273 | 579 | 290 | 12 | 111735101 | 32,76 | 111735106 | 32,86 |
| 318 | 203 | 640 | 315 | 14 | 111741101 | 34,50 | | 34,60 |
| 318 | 273 | 640 | 315 | 15 | 111907101 | 36,30 | 111907106 | 36,41 |
| 318 | 318 | 640 | 315 | 10 | 111739101 | 43,28 | 111739106 | 43,41 |
| 355 | 355 | 325 | 652 | 13 | 111724101 | 58,50 | 111724106 | 58,68 |

Tees with threaded outlet



| ØD mm | Ød mm | L ₁ mm | L ₂ mm | Max working pressure bar | Hot-dip galvanized Item No | Weight kg | Thermo-plastic coated Item No | Weight kg |
|----------|----------|----------------------|----------------------|-----------------------------|-------------------------------|--------------|----------------------------------|--------------|
| 48 | R1" | 148 | 80 | 25 | 111743101 | 0,50 | | |
| 48 | R2" | 148 | 97 | 25 | 111744101 | 0,81 | | |
| 60 | R1" | 160 | 87 | 25 | 111745101 | 0,69 | | |
| 60 | R2" | 160 | 70 | 25 | 111746101 | 0,80 | | |
| 60 | R2½" | 160 | 105 | 25 | 111747101 | 0,92 | | |
| 76 | R1" | 176 | 96 | 25 | 111748101 | 0,98 | | |
| 76 | R2" | 176 | 88 | 25 | 111749101 | 1,16 | | |
| 76 | R3" | 176 | 164 | 25 | 111750101 | 1,65 | | |
| 102 | R1" | 202 | 108 | 25 | 111752101 | 1,42 | 111752106 | 1,37 |
| 102 | R2" | 202 | 108 | 25 | 111909101 | 1,51 | 111909106 | 1,45 |
| 102 | R4" | 202 | 165 | 25 | 111753101 | 2,46 | 111753106 | 2,37 |
| 152 | R1" | 252 | 135 | 25 | 111756101 | 3,06 | 111756106 | 2,95 |
| 152 | R2" | 252 | 126 | 25 | 111910101 | 3,42 | 111910106 | 3,30 |
| 152 | R4" | 252 | 206 | 24 | 111757101 | 4,12 | 111757106 | 3,98 |

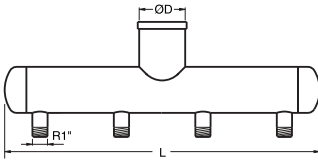
Hose sockets



| ØD mm | Ød mm | L mm | Max working pressure bar | Hot-dip galvanized Item No | Weight kg |
|----------|----------|---------|-----------------------------|-------------------------------|--------------|
| 48 | 1" | 185 | 25 | 111679101 | 0,45 |
| 48 | 1½" | 142 | 25 | 111680101 | 0,42 |
| 48 | 2" | 190 | 25 | 111279101 | 0,52 |
| 60 | 2" | 212 | 25 | 111683101 | 1,17 |
| 76 | 2" | 208 | 25 | 111684101 | 1,20 |
| 76 | 3" | 254 | 25 | 111281101 | 1,59 |
| 102 | 2" | 208 | 25 | 111685101 | 1,32 |
| 102 | 3" | 250 | 25 | 111686101 | 1,74 |
| 102 | 4" | 215 | 25 | 111283101 | 2,42 |
| 152 | 6" | 257 | 25 | 111285101 | 4,84 |
| 203 | 8" | 275 | 16 | 111690101 | 9,45 |

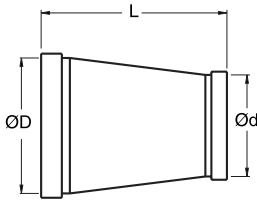
K10 pipes and pipe fittings

Air distributor pipes



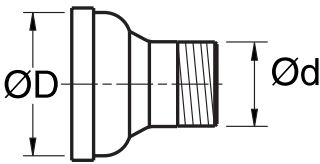
| ØD mm | Number of outlets | L mm | Max work. pressure bar | Hot-dip galvanized Item No | Weight kg |
|----------|----------------------|---------|---------------------------|-------------------------------|--------------|
| 48 | 3 | 492 | 25 | 111333101 | 2,34 |
| 60 | 4 | 676 | 25 | 111336101 | 3,02 |
| 76 | 4 | 686 | 25 | 111339101 | 3,98 |
| 102 | 4 | 700 | 18 | 111345101 | 5,28 |
| 152 | 4 | 726 | 13 | 111351101 | 9,61 |

Reducers



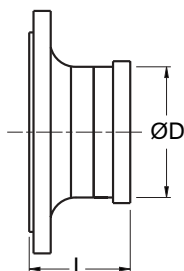
| ØD mm | Ød mm | L mm | Max work. pressure bar | Hot-dip galvanized Item No | Weight kg | Thermo-plastic coated Item No | Weight kg |
|----------|----------|---------|---------------------------|-------------------------------|--------------|----------------------------------|--------------|
| 60 | 48 | 85 | 25 | 111850101 | 0,72 | | |
| 76 | 48 | 85 | 25 | 111851101 | 0,39 | | |
| 76 | 60 | 86 | 25 | 111852101 | 0,44 | | |
| 102 | 48 | 135 | 25 | 111861101 | 0,53 | | |
| 102 | 60 | 135 | 25 | 111862101 | 0,59 | | |
| 102 | 76 | 85 | 25 | 111863101 | 0,65 | | |
| 152 | 48 | 147 | 25 | 111866101 | 2,94 | | |
| 152 | 76 | 130 | 25 | 111867101 | 2,05 | | |
| 152 | 102 | 85 | 25 | 111868101 | 1,19 | 111868106 | 1,15 |
| 203 | 152 | 191 | 16 | 111875101 | 4,54 | 111875106 | 4,25 |
| 254 | 203 | 278 | 16 | 111879101 | 9,11 | 111879106 | 8,74 |
| 318 | 203 | 303 | 16 | 111204101 | 18,52 | 111204106 | 17,77 |
| 318 | 254 | 303 | 16 | 111205101 | 19,31 | 111205106 | 18,54 |
| 318 | 273 | 303 | 16 | 111206101 | 12,58 | 111206106 | 12,08 |
| 355 | 318 | 430 | 16 | 111209101 | 16,21 | 111209106 | 15,56 |

Connecting pieces with thread



| ØD mm | Ød | Max work. pressure bar | Hot-dip galvanized Item No | Weight kg | Thermo-plastic coated Item No | Weight kg |
|----------|------|---------------------------|-------------------------------|--------------|----------------------------------|--------------|
| 48 | R1" | 25 | 110213101 | 0,29 | | |
| 48 | R2" | 25 | 110215101 | 0,48 | | |
| 60 | R1" | 25 | 110216101 | 0,45 | | |
| 60 | R2" | 25 | 110217101 | 0,53 | | |
| 60 | R2½" | 25 | 110218101 | 0,96 | | |
| 76 | R1" | 25 | 110219101 | 0,72 | | |
| 76 | R2" | 25 | 110221101 | 0,60 | | |
| 76 | R3" | 25 | 110223101 | 1,12 | | |
| 102 | R2" | 25 | 110227101 | 0,74 | 110227106 | 0,71 |
| 102 | R3" | 25 | 110229101 | 1,29 | 110229106 | 1,23 |
| 102 | R4" | 25 | 110230101 | 2,79 | 110230106 | 2,67 |
| 152 | R6" | 25 | 110237101 | 4,64 | 110237106 | 4,46 |

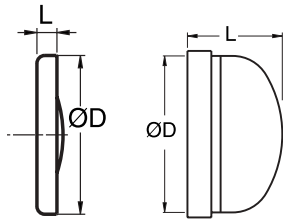
Connecting pieces with flange



| ØD mm | Flange DN/PN | DIN | L mm | Max work. press. bar | Hot-dip galvanized Item No | Weight kg | Thermo-plastic coated Item No | Weight kg |
|----------|-----------------|------|---------|-------------------------|-------------------------------|--------------|----------------------------------|--------------|
| 48 | 40/16 | 2633 | 87 | 16 | 111768101 | 1,97 | | |
| 60 | 60/16 | 2633 | 90 | 16 | 111771101 | 2,81 | | |
| 76 | 65/16 | 2633 | 90 | 16 | 111774101 | 3,43 | | |
| 102 | 100/16 | 2633 | 97 | 16 | 111780101 | 5,08 | 111780106 | 5,36 |
| 152 | 150/16 | 2633 | 100 | 16 | 111763101 | 9,04 | 111763106 | 8,72 |
| 203 | 200/10 | 2632 | 112 | 10 | 111789101 | 14,16 | 111789106 | 13,60 |
| 273 | 250/10 | 2632 | 118 | 10 | 111798101 | 18,63 | 111798106 | 17,88 |
| 318 | 300/10 | 2632 | 128 | 10 | 111799101 | 23,73 | 111799106 | 22,78 |
| 355 | 350/10 | 2632 | 118 | 10 | 111807101 | 26,20 | 111807106 | 25,15 |

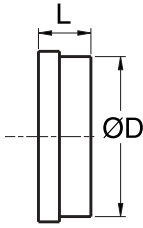
K10 pipes and pipe fittings

End caps



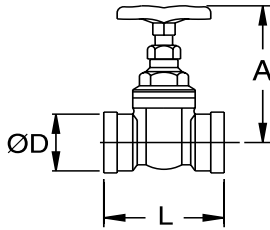
| ØD mm | L mm | Max work. pressure bar | Hot-dip galvanized Item No | Weight kg | Thermo-plastic coated Item No | Weight kg |
|----------|---------|---------------------------|-------------------------------|--------------|----------------------------------|--------------|
| 48 | 13 | 25 | 110349101 | 0,08 | | |
| 60 | 14 | 25 | 110351101 | 0,19 | | |
| 76 | 14 | 25 | 110353101 | 0,19 | | |
| 102 | 17 | 25 | 110357101 | 0,34 | 110357106 | 0,32 |
| 152 | 20 | 25 | 110361101 | 0,89 | 110361106 | 0,86 |
| 203 | 123 | 16 | 110364101 | 4,43 | 110364106 | 4,25 |
| 273 | 143 | 16 | 111816101 | 7,98 | 111816106 | 7,66 |
| 318 | 161 | 16 | 110368101 | 10,57 | 110368106 | 10,15 |
| 355 | 159 | 16 | 110370101 | 29,50 | 110370106 | 28,32 |

Welding rings, untreated



| ØD mm | L mm | Max work. pressure bar | Item No | Weight kg |
|----------|---------|---------------------------|-----------|--------------|
| 48 | 43 | 25 | 121898100 | 0,12 |
| 60 | 43 | 25 | 121899100 | 0,15 |
| 76 | 43 | 25 | 121910100 | 0,23 |
| 102 | 43 | 25 | 121902100 | 0,33 |
| 152 | 43 | 25 | 121904100 | 0,70 |
| 203 | 43 | 16 | 120334100 | 1,65 |
| 273 | 48 | 16 | 120356100 | 2,76 |
| 318 | 58 | 16 | 120362100 | 4,62 |
| 355 | 48 | 16 | 120390100 | 6,65 |

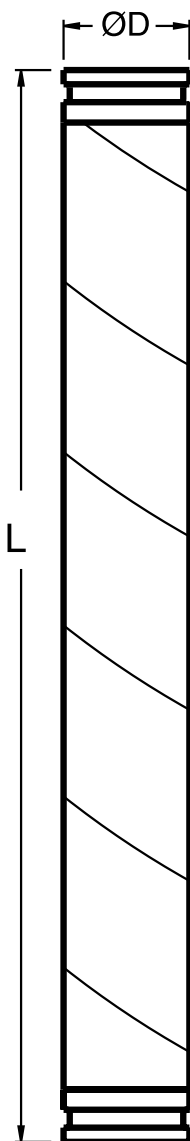
Alvenius gate valves



| Ø D mm | A mm | L mm | Max work. pressure bar | Brass Item No | Weight kg |
|-----------|---------|---------|---------------------------|------------------|--------------|
| 48 | 135 | 110 | 16 | 130001000 | 1,38 |
| 60 | 155 | 120 | 16 | 130002000 | 2,05 |
| 76 | 195 | 125 | 16 | 130003000 | 3,20 |
| 102 | 202 | 142 | 16 | 130004000 | 4,94 |
| 152 | 390 | 200 | 16 | 130005000 | 20,91 |

Type Victaulic pipes and pipe fittings

Pipes type Victaulic



| ØD mm | t mm | L m | Max working pressure bar | Hot-dip galvanized Item No | Weight kg | Thermo-plastic coated Item No | Weight kg |
|----------|---------|--------|-----------------------------|-------------------------------|--------------|----------------------------------|--------------|
| 60 | 1,8 | 0,2 | 50 | 101122801 | 0,59 | | |
| 60 | 1,8 | 0,5 | 50 | 101124801 | 1,54 | | |
| 60 | 1,8 | 1 | 50 | 101125801 | 2,87 | | |
| 60 | 1,8 | 3 | 50 | 101127801 | 8,82 | | |
| 60 | 1,8 | 5,8 | 50 | 101131801 | 17,05 | | |
| 76 | 2 | 0,2 | 60 | 100071801 | 0,82 | | |
| 76 | 2 | 0,5 | 60 | 100074801 | 2,05 | | |
| 76 | 2 | 1 | 60 | 100075801 | 4,11 | | |
| 76 | 2 | 3 | 60 | 100077801 | 12,32 | | |
| 76 | 2 | 5,8 | 60 | 100081801 | 23,81 | | |
| 89 | 2 | 0,2 | 40 | 100082801 | 0,96 | 100082806 | 0,91 |
| 89 | 2 | 5,8 | 40 | 101540801 | 27,93 | 101540806 | 26,29 |
| 89 | 2,9 | 0,2 | 70 | 101549801 | 1,35 | 101549806 | 1,30 |
| 89 | 2,9 | 0,5 | 70 | 100094801 | 3,38 | 100094806 | 3,24 |
| 89 | 2,9 | 1 | 70 | 100091801 | 6,76 | 100091806 | 6,49 |
| 89 | 2,9 | 3 | 70 | 100093801 | 20,29 | 100093806 | 19,46 |
| 89 | 2,9 | 5,8 | 70 | 101550801 | 39,22 | 101550806 | 37,62 |
| 114 | 2 | 0,2 | 40 | 100423801 | 1,24 | 100423806 | 1,17 |
| 114 | 2 | 5,8 | 40 | 100420801 | 36,09 | 100420806 | 33,85 |
| 114 | 2,9 | 0,2 | 60 | 100433801 | 1,75 | 100433806 | 1,67 |
| 114 | 2,9 | 0,5 | 60 | 100438801 | 4,38 | 100438806 | 4,18 |
| 114 | 2,9 | 1 | 60 | 100435801 | 8,76 | 100435806 | 8,37 |
| 114 | 2,9 | 3 | 60 | 100437801 | 26,28 | 100437806 | 25,11 |
| 114 | 2,9 | 5,8 | 60 | 100439801 | 50,80 | 100439806 | 48,54 |
| 139 | 2,5 | 0,2 | 40 | 100815801 | 1,87 | 100815806 | 1,77 |
| 139 | 2,5 | 5,8 | 40 | 100816801 | 54,36 | 100816806 | 51,47 |
| 139 | 3,6 | 0,2 | 70 | 100818801 | 2,63 | 100818806 | 2,53 |
| 139 | 3,6 | 0,5 | 70 | 100819801 | 6,58 | 100819806 | 6,32 |
| 139 | 3,6 | 1 | 70 | 100820801 | 13,16 | 100820806 | 12,64 |
| 139 | 3,6 | 3 | 70 | 100821801 | 39,48 | 100821806 | 37,93 |
| 139 | 3,6 | 5,8 | 70 | 100822801 | 76,32 | 100822806 | 73,34 |
| 168 | 2,5 | 0,2 | 40 | 100443801 | 2,27 | 100443806 | 2,15 |
| 168 | 2,5 | 5,8 | 40 | 100445801 | 65,69 | 100445806 | 62,40 |
| 168 | 4 | 0,2 | 60 | 100451801 | 3,52 | 100451806 | 3,40 |
| 168 | 4 | 0,5 | 60 | 100761801 | 8,79 | 100761806 | 8,50 |
| 168 | 4 | 1 | 60 | 100762801 | 17,58 | 100762806 | 17,01 |
| 168 | 4 | 3 | 60 | 100763801 | 52,74 | 100763806 | 51,02 |
| 168 | 4 | 5,8 | 60 | 100447801 | 101,97 | 100447806 | 98,65 |
| 219 | 3 | 0,2 | 30 | 100874801 | 3,51 | 100874806 | 3,37 |
| 219 | 3 | 5,8 | 30 | 100876801 | 101,88 | 100876806 | 97,60 |
| 219 | 4,5 | 0,2 | 40 | 100401801 | 5,15 | 100401806 | 5,00 |
| 219 | 4,5 | 0,5 | 40 | 100406801 | 12,88 | 100406806 | 12,51 |
| 219 | 4,5 | 1 | 40 | 100403801 | 25,76 | 100403806 | 25,01 |
| 219 | 4,5 | 3 | 40 | 100404801 | 77,27 | 100404806 | 75,04 |
| 219 | 4,5 | 5,8 | 40 | 100399801 | 149,38 | 100399806 | 145,07 |
| 219 | 6,3 | 0,2 | 60 | 100919801 | 7,09 | 100919806 | 6,94 |
| 219 | 6,3 | 0,5 | 60 | 100921801 | 17,72 | 100921806 | 17,34 |
| 219 | 6,3 | 1 | 60 | 100922801 | 35,43 | 100922806 | 34,68 |
| 219 | 6,3 | 3 | 60 | 100923801 | 106,30 | 100923806 | 104,04 |
| 219 | 6,3 | 5,8 | 60 | 101600801 | 205,50 | 101600806 | 201,14 |
| 273 | 4 | 0,2 | 30 | 100323801 | 5,76 | 100323806 | 5,58 |
| 273 | 4 | 0,5 | 30 | 100324801 | 14,39 | 100324806 | 13,95 |
| 273 | 4 | 1 | 30 | 100325801 | 28,78 | 100325806 | 27,90 |
| 273 | 4 | 3 | 30 | 100327801 | 86,35 | 100327806 | 83,69 |
| 273 | 4 | 5,8 | 30 | 100330801 | 166,95 | 100330806 | 161,80 |
| 273 | 5 | 0,2 | 40 | 100339801 | 7,12 | 100339806 | 6,94 |
| 273 | 5 | 0,5 | 40 | 100344801 | 17,80 | 100344806 | 17,35 |
| 273 | 5 | 1 | 40 | 100345801 | 35,59 | 100345806 | 34,71 |
| 273 | 5 | 3 | 40 | 100346801 | 106,78 | 100346806 | 104,12 |
| 273 | 5 | 5,8 | 40 | 100533801 | 206,43 | 100533806 | 201,31 |
| 323 | 4 | 0,2 | 30 | 100857801 | 6,85 | 100857806 | 6,62 |
| 323 | 4 | 0,5 | 30 | 100860801 | 17,12 | 100860806 | 16,54 |
| 323 | 4 | 1 | 30 | 100861801 | 34,23 | 100861806 | 33,08 |
| 323 | 4 | 3 | 30 | 100863801 | 102,69 | 100863806 | 99,25 |
| 323 | 4 | 5,8 | 30 | 100869801 | 198,54 | 100869806 | 191,88 |
| 323 | 5,6 | 0,2 | 40 | 101312801 | 9,44 | 101312806 | 9,20 |
| 323 | 5,6 | 0,5 | 40 | 101313801 | 23,60 | 101313806 | 23,01 |
| 323 | 5,6 | 1 | 40 | 101314801 | 47,20 | 101314806 | 46,02 |
| 323 | 5,6 | 3 | 40 | 101316801 | 141,60 | 101316806 | 138,06 |
| 323 | 5,6 | 5,8 | 40 | 101319801 | 273,76 | 101319806 | 266,91 |

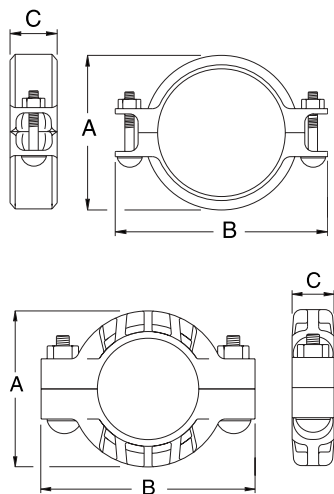
Type Victaulic pipes and pipe fittings

Pipes type Victaulic

| ØD mm | t mm | L m | Max working pressure bar | Hot-dip galvanized Item No | Weight kg | Thermo-plastic coated Item No | Weight kg |
|----------|---------|--------|-----------------------------|-------------------------------|--------------|----------------------------------|--------------|
| 323 | 6,3 | 0,2 | 55 | 101329801 | 10,57 | 101329806 | 10,33 |
| 323 | 6,3 | 0,5 | 55 | 101332801 | 26,42 | 101332806 | 25,82 |
| 323 | 6,3 | 1 | 55 | 101333801 | 52,83 | 101333806 | 51,64 |
| 323 | 6,3 | 3 | 55 | 101335801 | 158,49 | 101335806 | 154,91 |
| 323 | 6,3 | 5,8 | 55 | 101330801 | 306,42 | 101330806 | 299,49 |
| 406 | 5 | 0,2 | 21 | 101409801 | 10,66 | 101409806 | 10,39 |
| 406 | 5 | 0,5 | 21 | 101410801 | 26,65 | 101410806 | 25,97 |
| 406 | 5 | 1 | 21 | 101411801 | 53,31 | 101411806 | 51,93 |
| 406 | 5 | 3 | 21 | 101413801 | 159,92 | 101413806 | 155,80 |
| 406 | 5 | 5,8 | 21 | 101406801 | 309,19 | 101406806 | 301,21 |
| 406 | 6,3 | 0,2 | 32 | 101419801 | 13,31 | 101419806 | 13,03 |
| 406 | 6,3 | 0,5 | 32 | 101420801 | 33,28 | 101420806 | 32,58 |
| 406 | 6,3 | 1 | 32 | 101421801 | 66,56 | 101421806 | 65,17 |
| 406 | 6,3 | 3 | 32 | 101423801 | 199,67 | 101423806 | 195,51 |
| 406 | 6,3 | 5,8 | 32 | 101426801 | 386,02 | 101426806 | 377,99 |
| 508 | 5,6 | 0,2 | 21 | 108499801 | 14,90 | 108499806 | 14,57 |
| 508 | 5,6 | 0,5 | 21 | 108500801 | 37,25 | 108500806 | 36,42 |
| 508 | 5,6 | 1 | 21 | 108501801 | 74,50 | 108501806 | 72,84 |
| 508 | 5,6 | 3 | 21 | 108503801 | 223,50 | 108503806 | 218,52 |
| 508 | 5,6 | 5,8 | 21 | 108506801 | 432,09 | 108506806 | 422,48 |
| 508 | 6,3 | 0,2 | 25 | 108509801 | 16,69 | 108509806 | 16,36 |
| 508 | 6,3 | 0,5 | 25 | 108510801 | 41,73 | 108510806 | 40,90 |
| 508 | 6,3 | 1 | 25 | 108511801 | 83,46 | 108511806 | 81,80 |
| 508 | 6,3 | 3 | 25 | 108513801 | 250,37 | 108513806 | 245,40 |
| 508 | 6,3 | 5,8 | 25 | 108516801 | 484,04 | 108516806 | 474,44 |

Quick couplings and accessories

Coupling type Victaulic complete with rubber gasket



| ØD mm | A mm | B mm | C mm | Max. defl. | Max. work. press. bar | Painted Item No | Weight kg | Thermo-plastic coated Item No | Weight kg | |
|----------|---------|---------|---------|------------|--------------------------|--------------------|--------------|----------------------------------|--------------|-------|
| 60 | ST75 | 86 | 130 | 44 | 3,0° | 35 | 120930800 | 0,79 | 120930806 | 0,80 |
| 60 | ST77 | 92 | 143 | 44 | 3,0° | 69 | 120807800 | 1,20 | 120807806 | 1,21 |
| 76 | ST75 | 98 | 149 | 44 | 2,4° | 35 | 120931800 | 0,89 | 120931806 | 0,90 |
| 76 | ST77 | 110 | 160 | 44 | 2,4° | 69 | 120808800 | 1,41 | 120808806 | 1,44 |
| 89 | ST75 | 114 | 171 | 44 | 2,1° | 35 | 120932800 | 1,25 | 120932806 | 1,26 |
| 89 | ST77 | 127 | 178 | 44 | 2,1° | 69 | 120809800 | 1,72 | 120809806 | 1,74 |
| 114 | ST75 | 149 | 196 | 51 | 3,2° | 35 | 120933800 | 1,79 | 120933806 | 1,81 |
| 114 | ST77 | 162 | 216 | 51 | 3,2° | 69 | 120943800 | 3,04 | 120943806 | 3,08 |
| 139 | ST75 | 170 | 230 | 51 | 2,6° | 31 | 120937800 | 2,40 | 120937806 | 2,43 |
| 139 | ST77 | 193 | 240 | 51 | 2,6° | 69 | 120813800 | 4,76 | 120813806 | 4,83 |
| 168 | ST75 | 203 | 279 | 51 | 2,2° | 31 | 120935800 | 3,00 | 120935806 | 3,05 |
| 168 | ST77 | 229 | 292 | 51 | 2,2° | 69 | 120811800 | 5,18 | 120811806 | 5,26 |
| 219 | ST75 | 260 | 356 | 60 | 1,7° | 31 | 120936800 | 5,60 | 120936806 | 5,72 |
| 219 | ST77 | 289 | 368 | 60 | 1,7° | 55 | 120804800 | 9,10 | 120804806 | 9,24 |
| 273 | ST77 | 343 | 425 | 64 | 1,3° | 55 | 120825800 | 12,80 | 120825806 | 12,99 |
| 323 | ST77 | 394 | 483 | 64 | 1,1° | 55 | 120826800 | 15,50 | 120826806 | 15,73 |
| 406 | ST77 | 483 | 568 | 73 | 0,9° | 21 | 120828800 | 23,20 | 120828806 | 23,55 |
| 508 | ST77 | 597 | 699 | 79 | 0,7° | 21 | 120951800 | 41,40 | 120951806 | 42,02 |

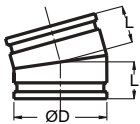
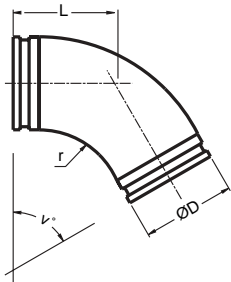
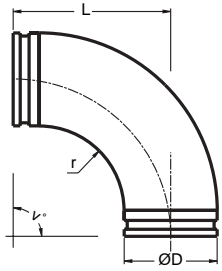
Rubber gaskets



| ØD mm | EPDM Item No | Weight kg |
|----------|-----------------|--------------|
| 60 | 120803801 | 0,04 |
| 76 | 120797801 | 0,05 |
| 89 | 120449801 | 0,07 |
| 114 | 120805801 | 0,10 |
| 139 | 120798801 | 0,15 |
| 168 | 120806801 | 0,18 |
| 219 | 120807801 | 0,25 |
| 273 | 120799801 | 0,65 |
| 323 | 120800801 | 0,75 |
| 406 | 120801801 | 0,80 |
| 508 | 120802801 | 0,95 |

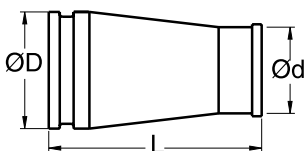
Type Victaulic pipes and pipe fittings

Bends



| ØD mm | Angle° | L mm | r mm | Max working pressure bar | Hot-dip galvanized Item No | Weight kg | Thermo-plastic coated Item No | Weight kg |
|----------|--------|---------|---------|-----------------------------|-------------------------------|--------------|----------------------------------|--------------|
| 60 | 7,5 | 111 | | 50 | 110466801 | 1,01 | | |
| 60 | 15 | 111 | | 50 | 110467801 | 1,01 | | |
| 60 | 30 | 65 | 48 | 69 | 110468801 | 0,65 | | |
| 60 | 45 | 75 | 48 | 69 | 110469801 | 0,78 | | |
| 60 | 90 | 121 | 48 | 69 | 110471801 | 1,04 | | |
| 76 | 7,5 | 111 | | 60 | 110487801 | 1,63 | | |
| 76 | 15 | 111 | | 60 | 110488801 | 1,46 | | |
| 76 | 30 | 70 | 57 | 60 | 110489801 | 0,96 | | |
| 76 | 45 | 82 | 57 | 60 | 110490801 | 1,16 | | |
| 76 | 90 | 140 | 57 | 60 | 110492801 | 1,69 | | |
| 89 | 7,5 | 50 | | 70 | 110508801 | 1,69 | 110508806 | 1,60 |
| 89 | 15 | 53 | | 70 | 110509801 | 1,70 | 110509806 | 1,61 |
| 89 | 30 | 75 | 70 | 70 | 110510801 | 1,39 | 110510806 | 1,32 |
| 89 | 45 | 90 | 70 | 70 | 110511801 | 1,62 | 110511806 | 1,54 |
| 89 | 90 | 159 | 70 | 70 | 110513801 | 2,45 | 110513806 | 2,32 |
| 114 | 7,5 | 51 | | 60 | 110543801 | 1,28 | 110543806 | 1,22 |
| 114 | 15 | 55 | | 60 | 110544801 | 1,96 | 110544806 | 1,86 |
| 114 | 30 | 85 | 96 | 60 | 110545801 | 2,06 | 110545806 | 1,96 |
| 114 | 45 | 105 | 96 | 60 | 110546801 | 2,57 | 110546806 | 2,45 |
| 114 | 90 | 197 | 96 | 60 | 110548801 | 3,73 | 110548806 | 3,54 |
| 139 | 7,5 | 57 | | 70 | 110600801 | 1,83 | 110600806 | 1,74 |
| 139 | 15 | 62 | | 70 | 110601801 | 1,88 | 110601806 | 1,79 |
| 139 | 30 | 95 | 120 | 70 | 110602801 | 2,99 | 110602806 | 2,84 |
| 139 | 45 | 120 | 120 | 70 | 110603801 | 3,78 | 110603806 | 3,59 |
| 139 | 90 | 235 | 120 | 70 | 110604801 | 6,13 | 110604806 | 5,82 |
| 168 | 7,5 | 61 | | 70 | 112376801 | 2,64 | 112376806 | 2,50 |
| 168 | 15 | 66 | | 70 | 112377801 | 2,69 | 112377806 | 2,55 |
| 168 | 30 | 105 | 145 | 70 | 112378801 | 4,64 | 112378806 | 4,41 |
| 168 | 45 | 135 | 145 | 70 | 112379801 | 5,71 | 112379806 | 5,42 |
| 168 | 90 | 274 | 145 | 70 | 112381801 | 9,29 | 112381806 | 8,82 |
| 219 | 7,5 | 65 | 195 | 60 | 110641801 | 5,55 | 110641806 | 5,27 |
| 219 | 15 | 85 | 195 | 60 | 110642801 | 6,83 | 110642806 | 6,48 |
| 219 | 30 | 125 | 195 | 60 | 110643801 | 9,49 | 110643806 | 9,02 |
| 219 | 45 | 165 | 195 | 60 | 110644801 | 12,37 | 110644806 | 11,75 |
| 219 | 90 | 350 | 195 | 60 | 110646801 | 24,00 | 110646806 | 22,80 |
| 273 | 7,5 | 75 | 245 | 60 | 110669801 | 7,62 | 110669806 | 7,24 |
| 273 | 15 | 100 | 245 | 60 | 110670801 | 9,79 | 110670806 | 9,30 |
| 273 | 30 | 152 | 245 | 60 | 110671801 | 13,74 | 110671806 | 13,05 |
| 273 | 45 | 208 | 245 | 60 | 110672801 | 18,00 | 110672806 | 17,10 |
| 273 | 90 | 431 | 245 | 60 | 110674801 | 32,00 | 110674806 | 30,40 |
| 323 | 7,5 | 63 | 295 | 55 | 110697801 | 10,19 | 110697806 | 9,66 |
| 323 | 15 | 110 | 295 | 55 | 110698801 | 13,88 | 110698806 | 13,19 |
| 323 | 30 | 172 | 295 | 55 | 110699801 | 21,14 | 110699806 | 20,08 |
| 323 | 45 | 239 | 295 | 55 | 110700801 | 28,46 | 110700806 | 27,04 |
| 323 | 90 | 507 | 295 | 55 | 110702801 | 50,36 | 110702806 | 47,84 |
| 406 | 7,5 | 103 | 406 | 21 | 110753801 | 16,14 | 110753806 | 15,33 |
| 406 | 15 | 140 | 406 | 21 | 110754801 | 21,88 | 110754806 | 20,79 |
| 406 | 30 | 221 | 406 | 21 | 110755801 | 32,60 | 110755806 | 30,97 |
| 406 | 45 | 313 | 406 | 21 | 110756801 | 43,40 | 110756806 | 41,23 |
| 406 | 90 | 670 | 406 | 21 | 110758801 | 75,70 | 110758806 | 71,92 |
| 508 | 7,5 | 102 | 508 | 21 | 110850801 | 23,32 | 110850806 | 22,15 |
| 508 | 15 | 152 | 508 | 21 | 110851801 | 31,67 | 110851806 | 30,09 |
| 508 | 30 | 256 | 508 | 21 | 110852801 | 48,36 | 110852806 | 45,94 |
| 508 | 45 | 368 | 508 | 21 | 110853801 | 65,05 | 110853806 | 61,80 |
| 508 | 90 | 814 | 508 | 21 | 110854801 | 115,13 | 110854806 | 109,37 |

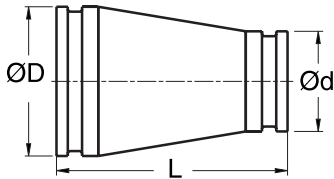
Reducers type Victaulic-K10



| ØD mm | Ød mm | L mm | Max working pressure bar | Hot-dip galvanized Item No | Weight kg | Thermo-plastic coated Item No | Weight kg |
|----------|----------|---------|-----------------------------|-------------------------------|--------------|----------------------------------|--------------|
| 114 | 102 | 90 | 25 | 112046801 | 0,97 | 112046806 | 0,92 |
| 168 | 152 | 87 | 25 | 111874801 | 1,67 | 111874806 | 1,59 |
| 219 | 203 | 148 | 16 | 111879801 | 6,19 | 111879806 | 5,88 |

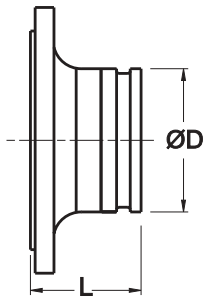
Type Victaulic pipes and pipe fittings

Reducers



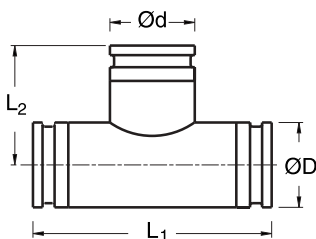
| ØD mm | Ød mm | L mm | Max working pressure bar | Hot-dip galvanized Item No | Weight kg | Thermo-plastic coated Item No | Weight kg |
|----------|----------|---------|-----------------------------|-------------------------------|--------------|----------------------------------|--------------|
| 76 | 60 | 180 | 70 | 111852801 | 1,12 | | |
| 89 | 60 | 180 | 70 | 112042801 | 1,33 | | |
| 89 | 76 | 180 | 70 | 111860801 | 1,56 | | |
| 114 | 60 | 190 | 60 | 112044801 | 1,88 | 112044806 | 1,79 |
| 114 | 76 | 190 | 60 | 112047801 | 1,96 | 112047806 | 1,87 |
| 114 | 89 | 190 | 60 | 111870801 | 2,12 | 111870806 | 1,94 |
| 139 | 60 | 217 | 70 | 111896801 | 2,82 | 111896806 | 2,69 |
| 139 | 89 | 217 | 70 | 111897801 | 3,08 | 111897806 | 2,92 |
| 139 | 114 | 217 | 70 | 112048801 | 3,21 | 112048806 | 3,05 |
| 168 | 60 | 230 | 70 | 111858801 | 3,95 | 111858806 | 3,76 |
| 168 | 89 | 230 | 70 | 111859801 | 4,20 | 111859806 | 3,99 |
| 168 | 114 | 230 | 70 | 111876801 | 4,54 | 111876806 | 4,31 |
| 168 | 139 | 230 | 70 | 111875801 | 4,52 | 111875806 | 4,28 |
| 219 | 114 | 242 | 60 | 111890801 | 7,48 | 111890806 | 7,10 |
| 219 | 139 | 242 | 60 | 112054801 | 7,73 | 112054806 | 7,35 |
| 219 | 168 | 242 | 60 | 111877801 | 8,01 | 111877806 | 7,61 |
| 273 | 219 | 278 | 60 | 111882801 | 12,65 | 111882806 | 12,02 |
| 323 | 273 | 303 | 55 | 111207801 | 33,85 | 111207806 | 32,16 |
| 406 | 323 | 465 | 21 | 111883801 | 48,15 | 111883806 | 45,74 |
| 508 | 406 | 628 | 21 | 111884801 | 37,10 | 111884806 | 35,25 |

Connecting pieces with flange



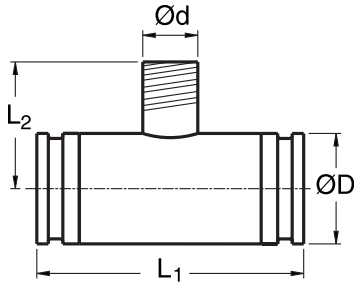
| ØD mm | Flange DN/PN | L mm | Max work. pres. bar | DIN | Hot-dip galvanized Item No | Weight kg | Thermo-plastic coated Item No | Weight kg |
|----------|-----------------|---------|------------------------|------|-------------------------------|--------------|----------------------------------|--------------|
| 60 | 50/40 | 93 | 40 | 2635 | 111771801 | 2,25 | | |
| 60 | 50/64 | 107 | 64 | 2636 | 111772801 | 3,85 | | |
| 76 | 65/40 | 97 | 40 | 2635 | 111774801 | 4,10 | | |
| 76 | 65/64 | 113 | 64 | 2636 | 111775801 | 6,10 | | |
| 89 | 80/40 | 103 | 40 | 2635 | 111777801 | 5,36 | 111777806 | 5,09 |
| 89 | 80/64 | 117 | 64 | 2636 | 111776801 | 7,82 | | |
| 114 | 100/40 | 109 | 40 | 2635 | 111782801 | 7,17 | 111782806 | 6,82 |
| 114 | 100/64 | 114 | 64 | 2636 | 111783801 | 10,35 | 111783806 | 9,83 |
| 139 | 125/40 | 113 | 40 | 2635 | 111787801 | 10,49 | 111787806 | 9,96 |
| 139 | 125/64 | 133 | 64 | 2636 | 111788801 | 16,10 | 111788806 | 15,30 |
| 168 | 150/40 | 120 | 40 | 2635 | 111765801 | 12,57 | 111765806 | 11,94 |
| 168 | 150/64 | 140 | 64 | 2636 | 111766801 | 23,30 | 111766806 | 22,14 |
| 219 | 200/40 | 133 | 40 | 2635 | 111792801 | 22,11 | 111792806 | 21,00 |
| 219 | 200/64 | 155 | 64 | 2636 | 111793801 | 36,74 | 111793806 | 34,90 |
| 273 | 250/64 | 175 | 64 | 2636 | 111798801 | 57,30 | 111798806 | 54,44 |
| 323 | 300/64 | 190 | 64 | 2636 | 111805801 | 76,40 | 111805806 | 72,58 |
| 406 | 400/16 | 145 | 16 | 2033 | 111811801 | 47,40 | 111811806 | 45,03 |
| 508 | 500/16 | 150 | 16 | 2033 | 111814801 | 72,90 | 111814806 | 69,26 |

Tees



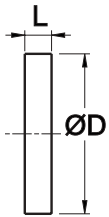
| ØD mm | Ød mm | L ₁ mm | L ₂ mm | Max working pressure bar | Hot-dip galvanized Item No | Weight kg | Thermo-plastic coated Item No | Weight kg |
|----------|----------|----------------------|----------------------|-----------------------------|-------------------------------|--------------|----------------------------------|--------------|
| 60 | 60 | 166 | 83 | 69 | 111698801 | 1,30 | | |
| 76 | 76 | 190 | 95 | 69 | 111701801 | 2,48 | | |
| 89 | 89 | 216 | 108 | 69 | 112100801 | 3,00 | 112100806 | 2,85 |
| 114 | 60 | 254 | 127 | 69 | 111737801 | 2,88 | | |
| 114 | 114 | 254 | 127 | 69 | 112105801 | 5,24 | 112105806 | 4,98 |
| 139 | 139 | 280 | 140 | 69 | 112109801 | 7,19 | 112109806 | 6,83 |
| 168 | 60 | 330 | 165 | 69 | 111736801 | 9,80 | | |
| 168 | 76 | 330 | 165 | 69 | 111720801 | 9,70 | | |
| 168 | 168 | 330 | 165 | 69 | 112115801 | 12,05 | 112115806 | 11,45 |
| 219 | 168 | 394 | 197 | 55 | 111731801 | 12,27 | 111731806 | 11,66 |
| 219 | 219 | 394 | 197 | 55 | 112120801 | 21,60 | 112120806 | 20,52 |
| 273 | 273 | 458 | 229 | 55 | 111735801 | 26,50 | 111735806 | 25,18 |
| 323 | 323 | 508 | 254 | 55 | 111905801 | 38,50 | 111905806 | 36,58 |
| 323 | 273 | 508 | 254 | 55 | 111762801 | 32,00 | 111762806 | 30,40 |
| 406 | 406 | 610 | 305 | 21 | 111725801 | 67,20 | 111725806 | 63,84 |
| 508 | 508 | 876 | 438 | 21 | 111500801 | 121,10 | 111500806 | 115,05 |

Tees with threaded outlet



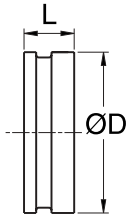
| ØD mm | Ød | L ₁ mm | L ₂ mm | Max working pressure bar | Hot-dip galvanized Item No | Weight kg | Thermo-plastic coated Item No | Weight kg |
|----------|----|----------------------|----------------------|-----------------------------|-------------------------------|--------------|----------------------------------|--------------|
| 60 | 2" | 250 | 95 | 50 | 111746801 | 1,34 | | |
| 76 | 2" | 266 | 93 | 46 | 111749801 | 2,00 | | |
| 89 | 2" | 279 | 93 | 60 | 111740801 | 2,45 | 111740806 | 2,33 |
| 114 | 2" | 304 | 108 | 49 | 111717801 | 3,28 | 111717806 | 3,12 |
| 139 | 2" | 329 | 123 | 52 | 111918801 | 4,50 | 111918806 | 4,27 |
| 168 | 2" | 458 | 138 | 50 | 111719801 | 8,60 | 111719806 | 8,17 |
| 219 | 2" | 509 | 165 | 48 | 111916801 | 15,70 | 111916806 | 14,92 |
| 273 | 2" | 573 | 193 | 38 | 111742801 | 23,43 | 111742806 | 22,26 |
| 323 | 2" | 623 | 219 | 36 | 111760801 | 38,39 | 111760806 | 36,47 |

End caps



| ØD mm | L mm | Max working pressure bar | Hot-dip galvanized Item No | Weight kg | Thermo-plastic coated Item No | Weight kg |
|----------|---------|-----------------------------|-------------------------------|--------------|----------------------------------|--------------|
| 60 | 22 | 69 | 110351801 | 0,31 | | |
| 76 | 22 | 69 | 110353801 | 0,53 | | |
| 89 | 22 | 69 | 110380801 | 0,63 | 110380806 | 0,62 |
| 114 | 25 | 69 | 110381801 | 1,11 | 110381806 | 1,12 |
| 139 | 25 | 69 | 110385801 | 1,97 | 110385806 | 2,01 |
| 168 | 25 | 69 | 110383801 | 2,74 | 110383806 | 2,90 |
| 219 | 30 | 55 | 110384801 | 5,78 | 110384806 | 5,90 |
| 273 | 32 | 55 | 111816801 | 9,76 | 111816806 | 9,95 |
| 323 | 32 | 55 | 110369801 | 16,03 | 110369806 | 16,35 |

Welding rings, untreated



| ØD mm | t mm | L mm | Max working pressure bar | Item No | Weight kg |
|----------|---------|---------|-----------------------------|-----------|--------------|
| 60 | 1,8 | 43 | 83 | 120983810 | 0,20 |
| 76 | 2 | 43 | 60 | 120280810 | 0,29 |
| 89 | 2 | 43 | 40 | 120985810 | 0,39 |
| 89 | 3,2 | 43 | 70 | 120985820 | 0,43 |
| 114 | 2 | 43 | 40 | 120851810 | 0,51 |
| 114 | 2,9 | 43 | 60 | 120851820 | 0,53 |
| 114 | 3,6 | 43 | 85 | 120851830 | 0,57 |
| 139 | 2,5 | 43 | 40 | 120852810 | 0,66 |
| 139 | 3,6 | 43 | 70 | 120852820 | 0,72 |
| 168 | 2,5 | 43 | 40 | 120855810 | 0,85 |
| 168 | 4 | 43 | 60 | 120855820 | 0,98 |
| 168 | 6,3 | 43 | 70 | 120855830 | 1,12 |
| 219 | 3 | 43 | 30 | 120865810 | 1,55 |
| 219 | 4,5 | 43 | 40 | 120865820 | 1,69 |
| 219 | 6,3 | 43 | 60 | 120865830 | 1,86 |
| 273 | 4 | 48 | 30 | 120357800 | 2,40 |
| 273 | 5 | 48 | 40 | 120356800 | 2,43 |
| 273 | 6,3 | 48 | 60 | 120358800 | 2,47 |
| 323 | 4 | 48 | 30 | 120844800 | 2,61 |
| 323 | 5,6 | 48 | 40 | 120845800 | 2,66 |
| 323 | 6,3 | 48 | 55 | 120846800 | 2,79 |
| 406 | 5 | 58 | 21 | 120391810 | 4,18 |
| 508 | 5,6 | 58 | 21 | 120392810 | 7,00 |

Assembly instruction



1.

The gaskets outer mating surface and the lips' inner mating surfaces are lightly greased with a lithium or silicon-based grease. The rubber gasket is slid onto one of the pipe ends.



2.

Align the connecting pipe's end with a clearance of 2-3 mm. Slide the rubber gasket over the joint.



3.

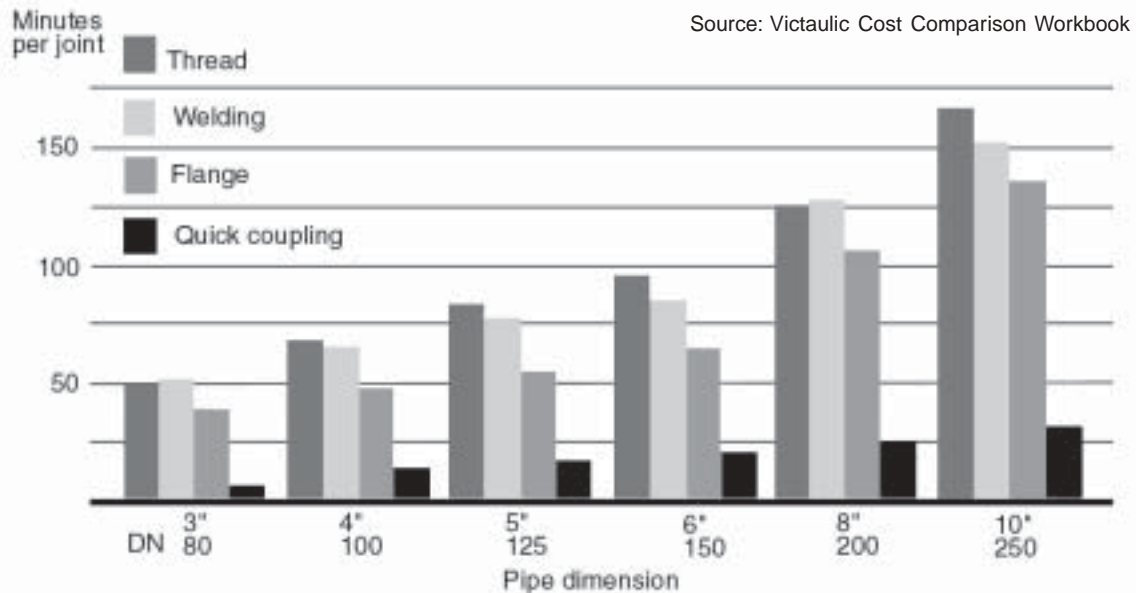
Fit the two halves of the coupling so that they enclose the gasket and the pipe ends.



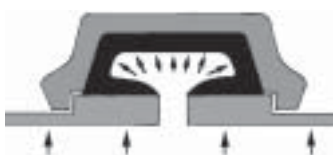
4.

Tighten the screws evenly and alternately.

Assembly times compared



Self-sealing gaskets



Gauge pressure



Vacuum pressure



Non-alignment



Compression



SIHCon AS
Idrettsveien 21 d
1087 Oslo
TLF: 22 21 16 70
FAX: 22 21 16 21
E-MAIL: post@sihcon.no



Cert. No. 952144



Cert. No. SW980145

